

A Survey on Predicting User Service Rating in Social Network Using Data Mining Methods

Niveditha.N¹, Praveena.R², Anu.S³

UG Scholar, Department of Computer Science and Engineering, Sri Krishna College of Technology, Coimbatore, Tamil Nadu, India¹

UG Scholar, Department of Computer Science and Engineering, Sri Krishna College of Technology, Coimbatore, Tamil Nadu, India²

Assistant Professor, Department of Computer Science and Engineering, Sri Krishna College of Technology, Coimbatore, Tamil Nadu, India³

ABSTRACT: Recommender system plays an important role in our daily life. Recommender systems naturally intimate items to users that might be fascinating for them. We propose probabilistic matrix factorization technique for recommendations. The (PMF) model is proposed which computes continuously with the number of investigations and, more specially, functions well on the massive, inadequate, and very uneven Netflix dataset. A user –service rating prediction approach is proposed by exploring the behavior of user’s rating in social network. The probabilistic matrix factorization is a model-based collaborative filtering approach. The Probabilistic Matrix Factorization algorithm integrates multiple information sources into the recommendation model in order to reduce the data sparsity and cold start problems and their degradation of recommendation performance. In the approach of user service rating prediction our factors are fused user personal interest interpersonal interest similarity interpersonal rating behavior similarity and interpersonal rating behavior diffusion into a unified matrix-factorized framework

KEYWORDS : Data mining, Recommender Systems, Social network

I.INTRODUCTION

Data mining is the process of restoring patterns and advantageous information from large amount of data. The techniques such as prediction, evaluation and recommendation are the most used data mining techniques in social networks. With the enormous amount of data stored in databases, files and other repositories, it is increasingly important if not necessary to develop powerful means for analysis and reasonably clarification of such data and for the taking out of enchanting facts that could help in decision making. Data Mining is known as Knowledge Discovery in Databases (KDD) refers to the nontrivial extraction of implicit previously unknown and potentially useful information from data in databases, while data mining and knowledge discovery in databases are often considered as equivalent. Data mining is literally element of the knowledge exploration process

Data mining is a practice followed by agencies to change raw data to profitable information. By adopting software to search for patterns in huge group of data, businesses can study more about their clients and progress more useful marketing methods as well as enlarged sales and reduced costs.

Data mining lean on impressive data combination and storing likewise computer processing. Supermarkets are notable representatives of data mining approaches. Many shopping plaza provide unpaid loyalty cards to purchasers that grant them access to decreased cost not accessible to non-members.

International Journal of Innovative Research in Science, Engineering and Technology

(An ISO 3297: 2007 Certified Organization)

Website: www.ijirset.com

Vol. 6, Issue 3, March 2017

The cards make it easy for stores to track who is buying what, when they are buying it and at what price they are buying. The stores can use this data, after investigating it, for different objectives, such as offering customers coupons targeted to their purchasing behaviors and deciding when to put items on sale or when to sell them at full price.

The data mining technique illustrate into five steps. First, management gather data and pack it into their data storehouses. Next, they save and maintain the data, either on in-house servers or the cloud. Business examiner, executive teams and computer science specialist access the data and take a decision on how to establish it. Then, application software arranges the data based on the user impact, and lastly, the end user displays the data in an easy-to-share way, such as a chart or table.

Data mining has number of real time applications such as financial data analysis, retail industry, telecommunication industry, biological data analysis, other scientific applications and intrusion detection.

II. RELATED WORK

RECOMMENDATION SYSTEM AND TECHNIQUES: Recommender systems are emerging as tools of choice to select online information relevant to a given user. Recommender systems work from a specific type of information filtering system technique that attempts to suggest items that are acceptable to be of interest of the user. Typically, a recommender system compares a user profile to some reference characteristics, and seeks to foretell the rating that a user would give to an item they had not yet considered. These characteristics may be from the information item-it may be analogous (the content-based approach) or the user's social environment (the collaborative filtering).

Recommender systems are powerful engines for personalization. The suggestions are taken from user's friends circle because the social users trust their idea. Their friends and family circle know what the users like better than anyone else. This is the main reason they are good at suggesting items.

The recommender system utilizes data mining methods and prediction algorithms to prognosticate user's interest on items from massive amount of accessible items. Recommender systems make suggestions automatically for a particular user on the basis of the user's browsing history, ratings and comments given to an item. Recommender systems apply techniques and improve the recommendation task.

Recommender systems commonly produce a list of suggestions in one of the two techniques - through collaborative or content-based filtering. Content based algorithm recommender systems is the recommender system which work with profiles of users that are set up at the beginning. A profile has details of a user and the users interest. Interest depends upon how user rated items. In Collaborative filtering technique is based on collecting and examining large number of information about user's habits, activities and foretell what a user will like based on the similarity to other users. The main benefit of the collaborative filtering method is that it does not depend on machine analyzable content and therefore it is capable of accurately suggesting complex items such as movies without necessitating the understanding of the item.

International Journal of Innovative Research in Science, Engineering and Technology

(An ISO 3297: 2007 Certified Organization)

Website: www.ijirset.com

Vol. 6, Issue 3, March 2017

The different types of recommendation techniques are given below in the Fig1.

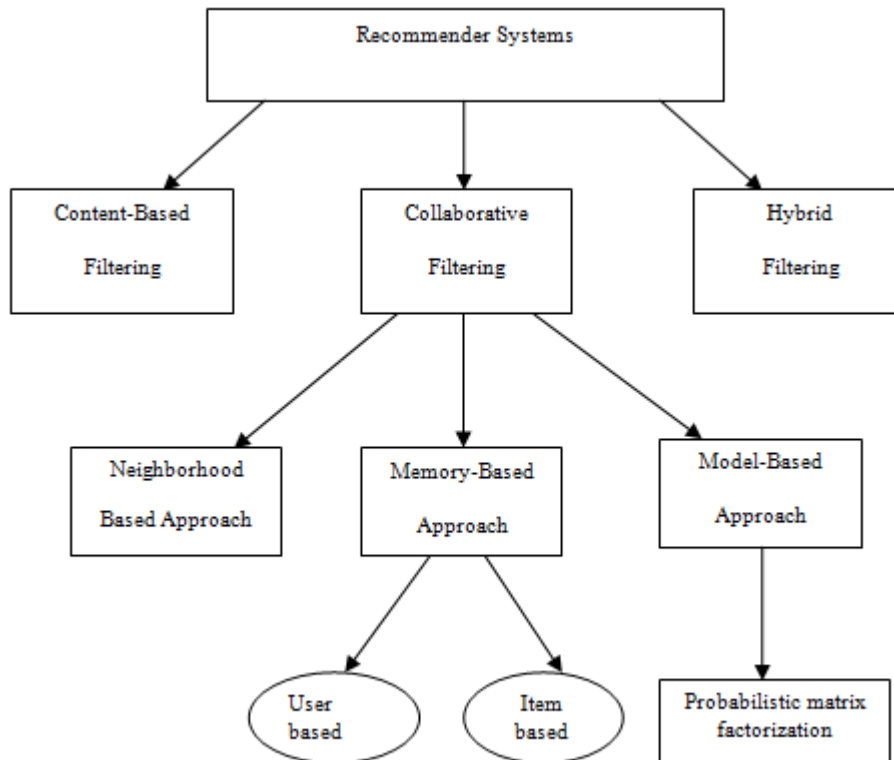


Fig1. Recommender System Types

The branches of recommender system are given below

Personalized Recommendation: Personalized recommendation enables the online customization or suggestion of data in any format that is relevant to each and every user based on the users implicit and explicit behavior and tastes and explicitly provided details [2]. Personalized recommendation engines are classified into three types depends on their approach to recommendation [3].

The different types of personalized recommendation are given below

Collaborative Filtering: Collaborative filtering Algorithm recommender system became one of the most researched techniques in the recommender systems since this approach was mentioned and described by Group Lens system in 1994. [1] The concept of collaborative filtering is to discover users in a center that share acknowledgement. If two users have same or almost same rated items in common, then they have similar tastes [2]. Such users frame a batch so called neighborhood. A user gets recommendations to those items that he/she has not rated before, but that were already positively rated by users in his/her neighborhood.

Various approaches of Collaborative Filtering are:

1. User based approach,
2. Item based approach .

1. User based approach: In this method, the users function them major part. If definite superiority of the clients has the equal taste then they combine into one group. Suggestion are given to user based on rating of items by other users form the same group, with whom he or she share familiar choices. If the item was positively rated by the community, it will be suggested to the user.

International Journal of Innovative Research in Science, Engineering and Technology

(An ISO 3297: 2007 Certified Organization)

Website: www.ijirset.com

Vol. 6, Issue 3, March 2017

2. Item Based Approach: The taste of users remains constant or change very slightly similar items build neighborhoods based on appreciations of users. Afterwards the system generates recommendations with items in the neighborhood that a user would prefer.

Content Based Filtering: Content-based filtering, also recommends items based on a variance between the content of the items and a user profile. Those user profiles are being created at the starting point when the user enters the system. The user profile has the information related to the user and also about the choice or interest of user. Choice will depend on the how the user will rate the item. Movies and TV programs are especially used for recommendation purpose. In recommendation process, the engine always compares the items that were previously rated by user with those items which he did not rate at all tries to look for prevalence. Lastly the user will get a recommendation on those items that are positively rated ones.

Each content based system has some things in common like that of user profiles or the approaches. While implementing content-based system several problems need to be considered. First issue is that terms can be allocated either manually or automatically. Secondly the terms have to be represented in such a way that both the items and user profiles can be measured in a meaningful way. Conclusively a learning algorithm need to be selected that is able to understand the user profile based on the seen items and can generate recommendations based on user profile.

Hybrid Filtering: Hybrid recommender systems are those systems that merge multiple recommendations [4] technique together to acquire a unity between. Mostly content based filtering and collaborative filtering is combined together to develop hybrid recommendation technique. When combining two or more recommendation system hybrid recommendation systems gain better performance and also overcomes some drawbacks such as content description and sparsity problem.

III.EXISTING METHODOLOGY

Numerous models based on social networks have been proposed to improve recommender system performance. They are:

1. The method of 'inferred trust circle' based on friends circle was designed by Yang [8] for the purpose of suggesting popular and number one items to users. Their approach, called the Circle Con Model, not only lessens the load of big data and estimation complexity, but also determines the relational faith in the complicated social networks.
2. Personalized travel recommendation was proposed by Chen [9] by considering user attributes and social information.
3. Jiang [10] proved that an user's individual choice is also an important aspect in social networks.
4. Herlocker et al [11] proposed a model which shows the similarity between users or items according to the number of common ratings.
5. Deshpande and Karypis [12] proposed an item-based CF combined with a condition-based probability similarity and Cosine Similarity.

IV.CHALLENGES AND ISSUES

Cold start : It's challenging to give suggestions to unfamiliar users as his/her profile is almost blank and he has not rated any items and so his taste is anonymous to the system. This is known as the cold start obstacle In some recommender systems this problem is solved with survey when creating a profile. Items can have cold-start issue

International Journal of Innovative Research in Science, Engineering and Technology

(An ISO 3297: 2007 Certified Organization)

Website: www.ijirset.com

Vol. 6, Issue 3, March 2017

when they are new in the system and haven't been rated before. The above two problems can also be solved with hybrid methods [4].

Scalability: With the growth of numbers of users and items, the system requires more resources for processing information and forming recommendations. Most of resources is consumed with the purpose of determining users with similar tastes, and goods with similar descriptions. This problem is also solved by combining various types of filtering technique and physical advancement of systems. Parts of many estimations may also be implemented offline in order to stimulate issuance of recommendations online. [5]

Sparsity: In online shopping those have a huge amount of users and items there are almost always users that have rated just a few items. Using collaborative filtering and other approaches recommender systems generally create neighborhoods of users using their profiles. If a user has he/she could be related to the wrong neighborhood. Sparsity is the issue of scarcity of information. [6]

Privacy: Privacy has been the most significant problem [7]. In order to receive the most accurate and correct recommendation, the system must collect the most amount of information mainly about the user, including analytical data, and data about the area of a individual user. Naturally, the query of reliability, security and confidentiality of the given information arises. Specially designed algorithms and programs can be conducted to deal with this privacy protection problem.

V.PROPOSED METHODOLOGY

The user-service rating prediction model is proposed based on probabilistic matrix factorization by analyzing rating behaviors. Commonly, users like to be a participant in services in which they are interested and love sharing exposures with their friends by giving reviews and rating.

A user-service rating foretelling approach is proposed by examining social users' rating habits in a combined matrix factorization framework.

The essential proposals of the paper are:

1. The aspect of interpersonal rating ways diffusion is proposed to well understand users' rating habits.
2. The user's social circle is analyzed and split the social network into three parts, direct friends, mutual friends, and the indirect friends, to well understand social users' rating habit diffusions.
3. Four factors, intimate interest, social interest similarity, social rating habit similarity, and social rating behavior diffusion are fused into matrix factorization with fully exploring user rating habits to foretell user-service ratings.
4. These four social factors are combined together to constrain user's latent features, which can decrease the time complexity of our model.

International Journal of Innovative Research in Science, Engineering and Technology

(An ISO 3297: 2007 Certified Organization)

Website: www.ijirset.com

Vol. 6, Issue 3, March 2017

The Fig2 shows us the working of the proposed methodology

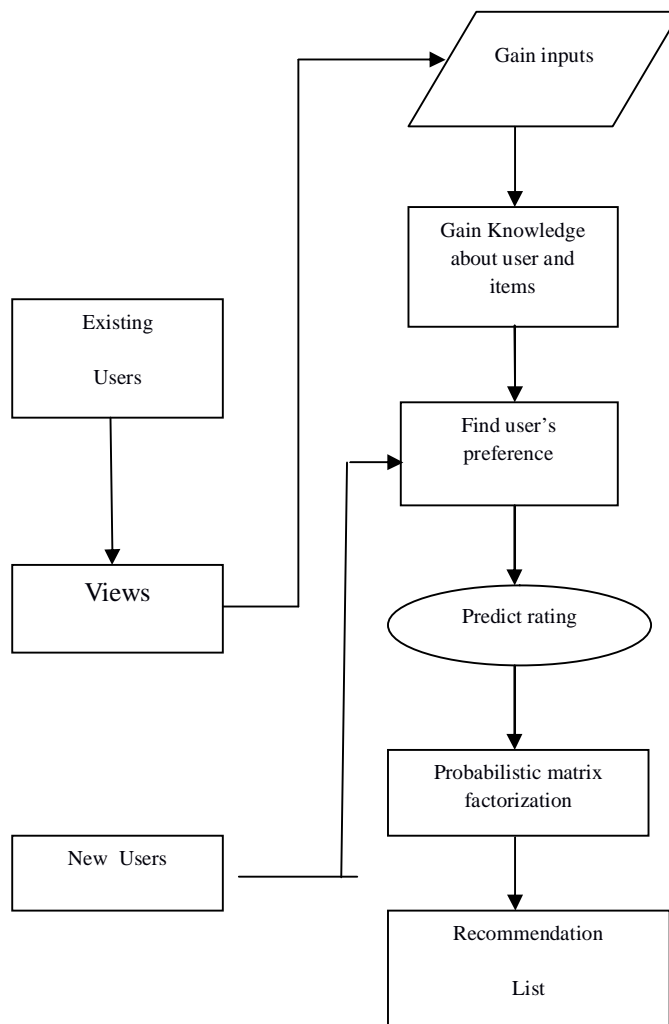


Fig2.Data flow diagram

VI.PROPOSED METHODOLOGY ADVANTAGES

The proposed methodology has the following advantages

1. We proposed a suggestion approach (probabilistic matrix factorization) that incorporates both (explicit and implicit) influence of rating and trust information.
2. Using probabilistic matrix factorization, transmission cost and estimation cost is reduced.
3. Comparing to current method, forecasting and faith efficiency becomes high
4. The probabilistic matrix factorization approach overcomes the problems such as cold start, scalability sparsity and privacy.

International Journal of Innovative Research in Science, Engineering and Technology

(An ISO 3297: 2007 Certified Organization)

Website: www.ijirset.com

Vol. 6, Issue 3, March 2017

VII. CONCLUSION AND FUTURE WORK

A personalized suggestion approach was proposed by combining social network factors: intimate interest, social interest similarity, and interpersonal impact. In particular, the personal interest denotes user's individuality of rating items, especially for the professional users, and these factors were combined together to improve the faultlessness and appropriateness of recommender system. We conducted extensive experiments on two large real-world social rating datasets, and showed significant development over current approaches that use mixed social network information. At current, the personalized suggestion model only takes user historical rating records and mutual relationship of social network into consideration. In our future works, we will consider user location information to suggest more personalized and real-time items.

REFERENCES

- [1] P. Resnick, N. Iacovou, M. Suchak, P. Bergstrom, and J. Riedl, "Grouplens: An open architecture for collaborative filtering of netnews," in Proc. CSCW, 1994, pp. 175–186.
- [2] X.-W. Yang, H. Steck, and Y. Liu, "Circle-based recommendation in online social networks," in Proc. KDD, 2012, pp. 1267–1275.
- [3] M. Jiang et al., "Social contextual recommendation," in Proc. 21st ACM Int. CIKM, New York, NY, USA, 2012, pp. 45–54.
- [4] M. Jahrer, A. Toscher, and R. Legenstein, "Combining predictions for accurate recommender systems". KDD'10, pp. 693-702, 2010.
- [5] Osman Khalid, Muhammad Usman Shahid Khan, Samee U. Khan, Albert Y. Zomaya, "OmniSuggest: A Ubiquitous Cloud-Based Context-Aware Recommendation System for Mobile Social Networks" IEEE Transaction on Services Computing. Vol. 7, No. 3, July-September 2014.
- [6] M. Richardson and P. Domingos, "Mining knowledge-sharing sites for viral marketing," in Proc. KDD, 2002, pp. 61–70
- [7] J. Bobadilla, F. Ortega, A. Hernando, and A. Gutierrez, "Recommender Systems Survey", Knowledge-Based System, vol. 46, pp. 109-132, July 2013.
- [8] X.-W. Yang, H. Steck, and Y. Liu, "Circle-based recommendation in online social networks," in Proc. KDD, 2012, pp. 1267–1275.
- [9] C. Cheng, H. Yang, I. King, and M. R. Lyu, "Fused matrix factorization with geographical and social influence in location-based social networks," in Proc. AAAI, 2012, pp. 17–23.
- [10] S. Jiang, X. Qian, J. Shen, Y. Fu, and T. Mei, "Author topic model based collaborative filtering for personalized POI recommendations," IEEE Trans. Multimedia, vol. 17, no. 6, pp. 907–918, Jun. 2015.
- [11] J. Herlocker, J. Konstan, and J. Riedl, "An empirical analysis of design choices in neighborhood-based collaborative filtering algorithms," Information Retrieval, vol. 5, no. 4, pp. 287–310, 2002.
- [12] M. Deshpande and G. Karypis, "Item-based top-n recommendation algorithms," ACM Trans. Inform. Syst., vol. 22, no. 1, pp. 143–177, 2004.